

**Appendices 14/0935/FUL**

**Sainsbury's Supermarkets Ltd, Whitehouse Farm , Bishopton Road West, Stockton-On-Tees**

**Erection of 3-pump petrol filling station, associated kiosk and plant room and alterations to car park layout and landscaping**

1. Site Location Plan
2. Elevation Plans
3. Kiosk Floor Plan
4. Site location plan showing petrol filling station, kiosk and plant room
5. Site location plan showing overall site and petrol filling station, kiosk and plant room
6. Landscaping plan

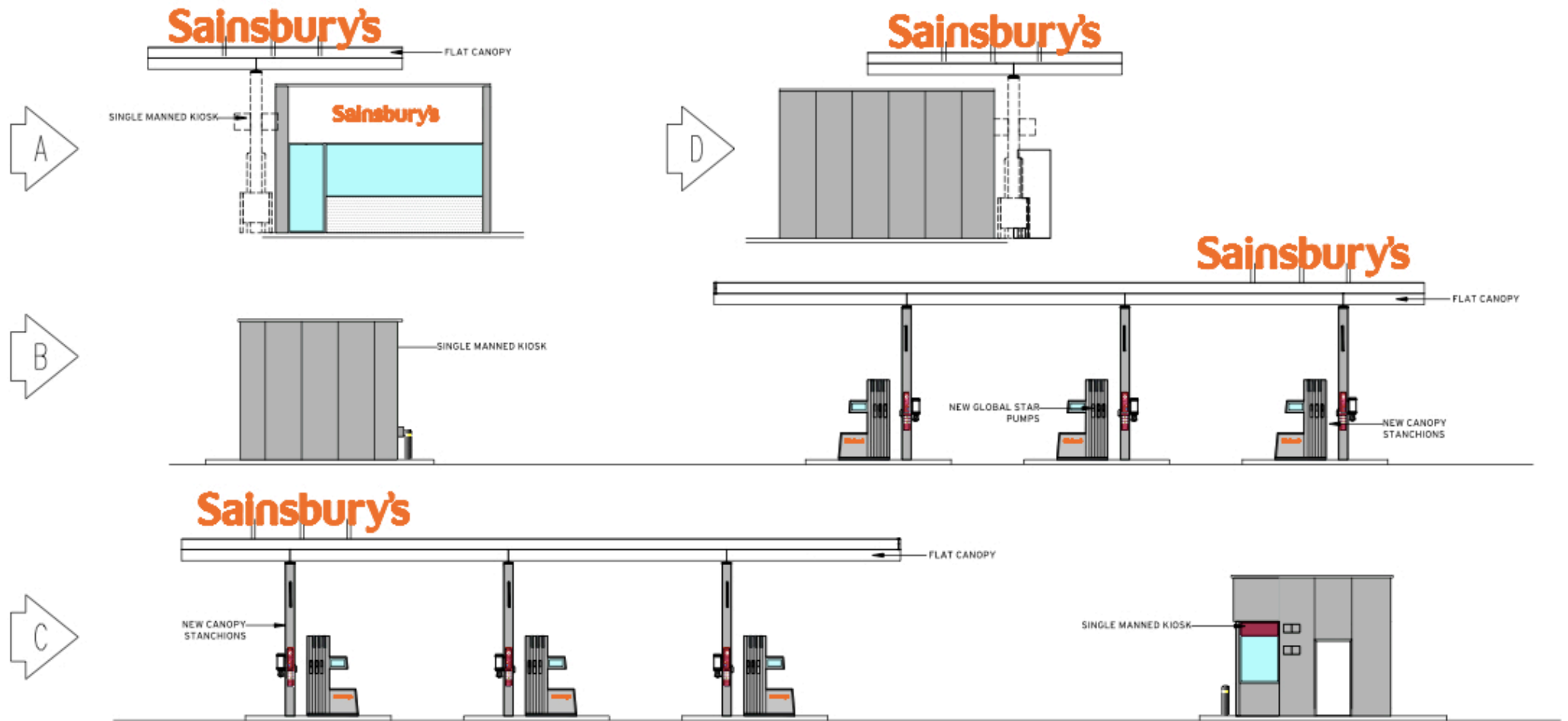
1.Site Location Plan



APPROXIMATE NORTH

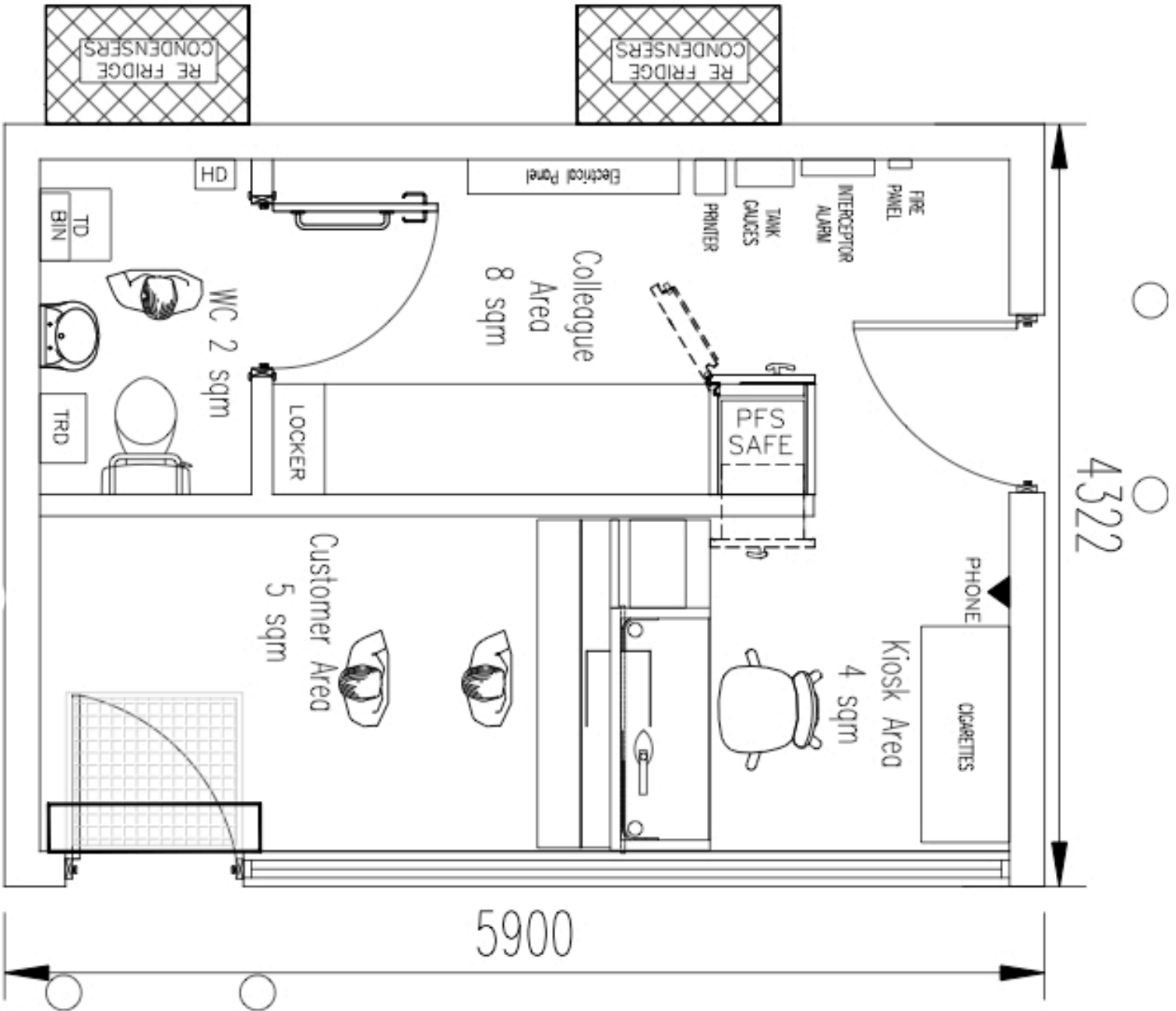
LOCATION PLAN 1:1250

2. Elevation plans



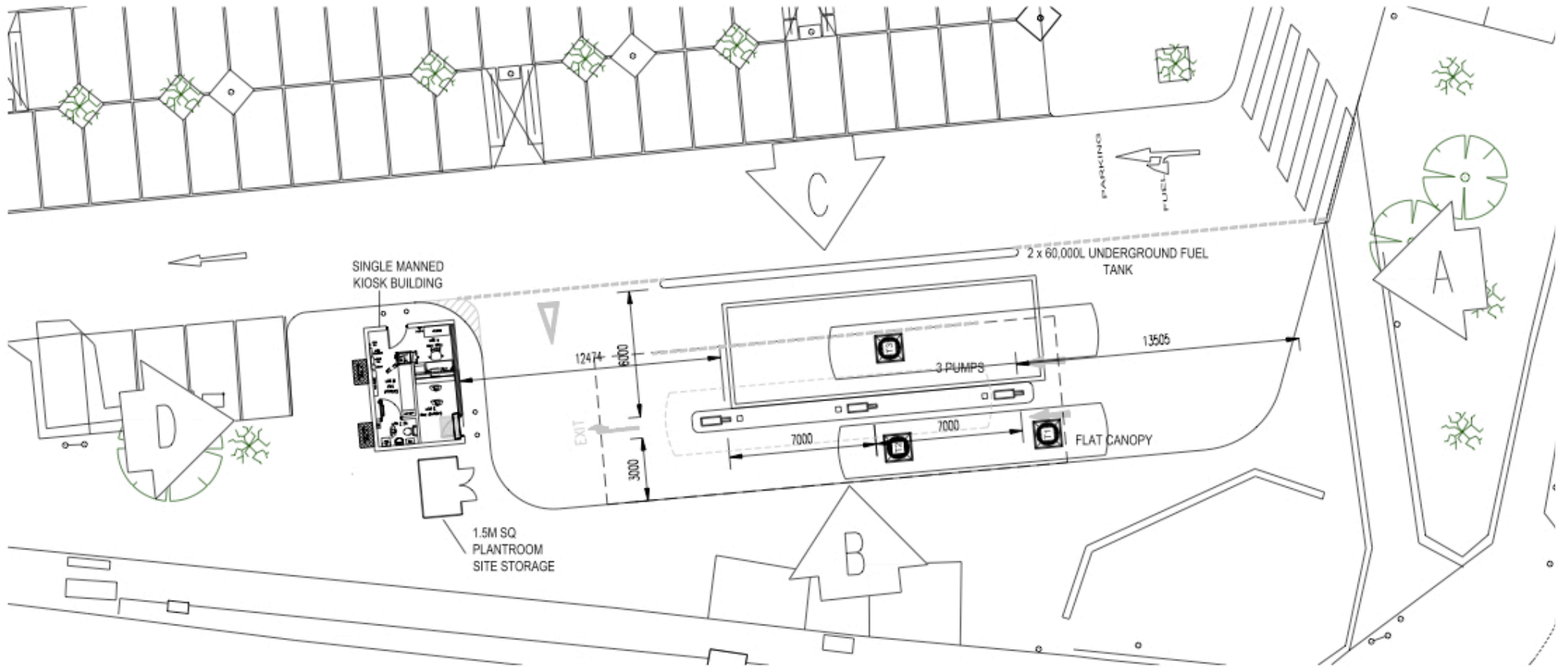
**ELEVATIONS @ 1:125**

NOTE: SIGNAGE SHOWN IS INDICATIVE AND SUBJECT TO A SEPERATE APPLICATION



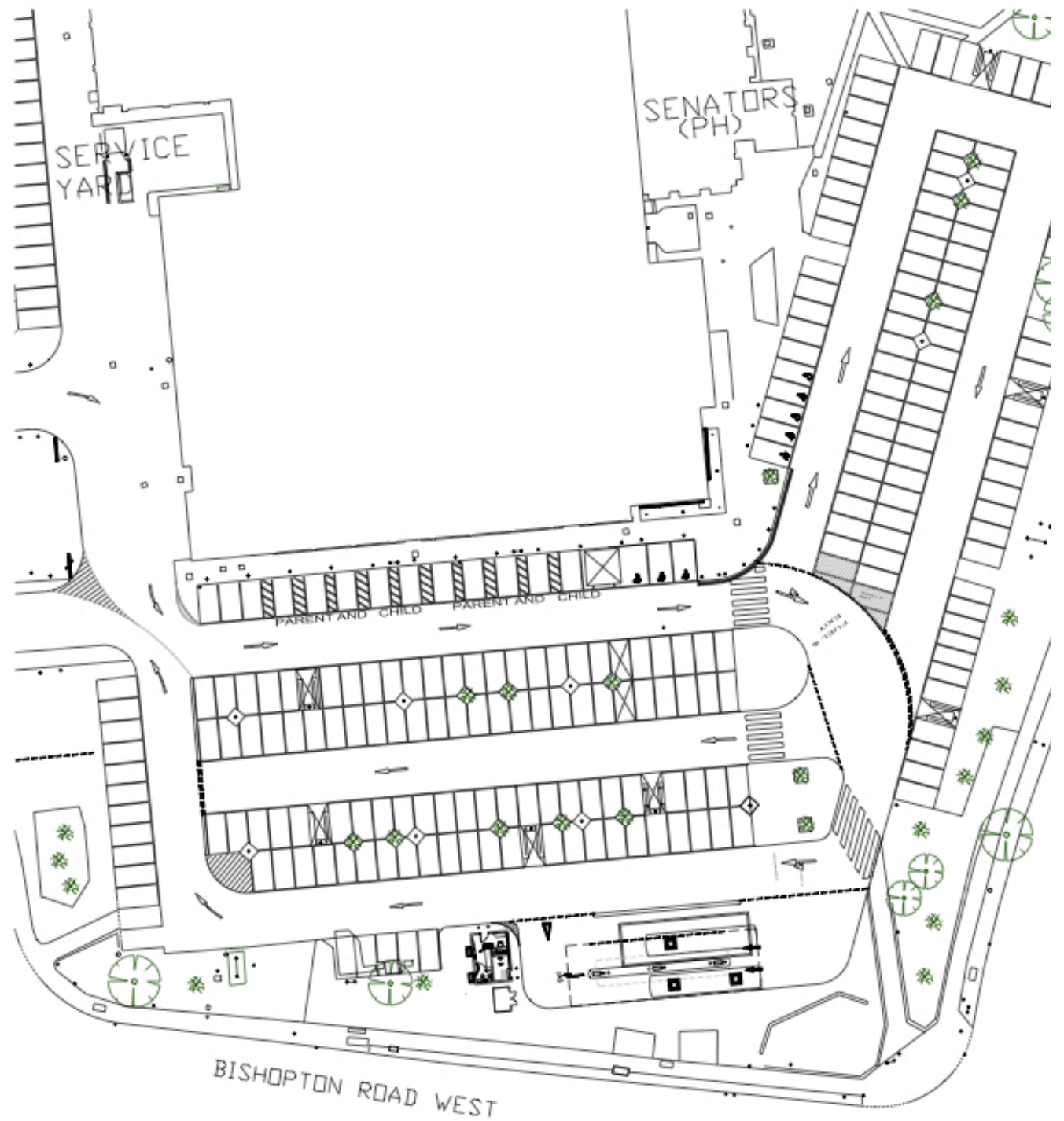
**KIOSK PLAN 1:30**

4. Site location plan showing petrol filling station, kiosk and plant room



SITE PLAN 1:125

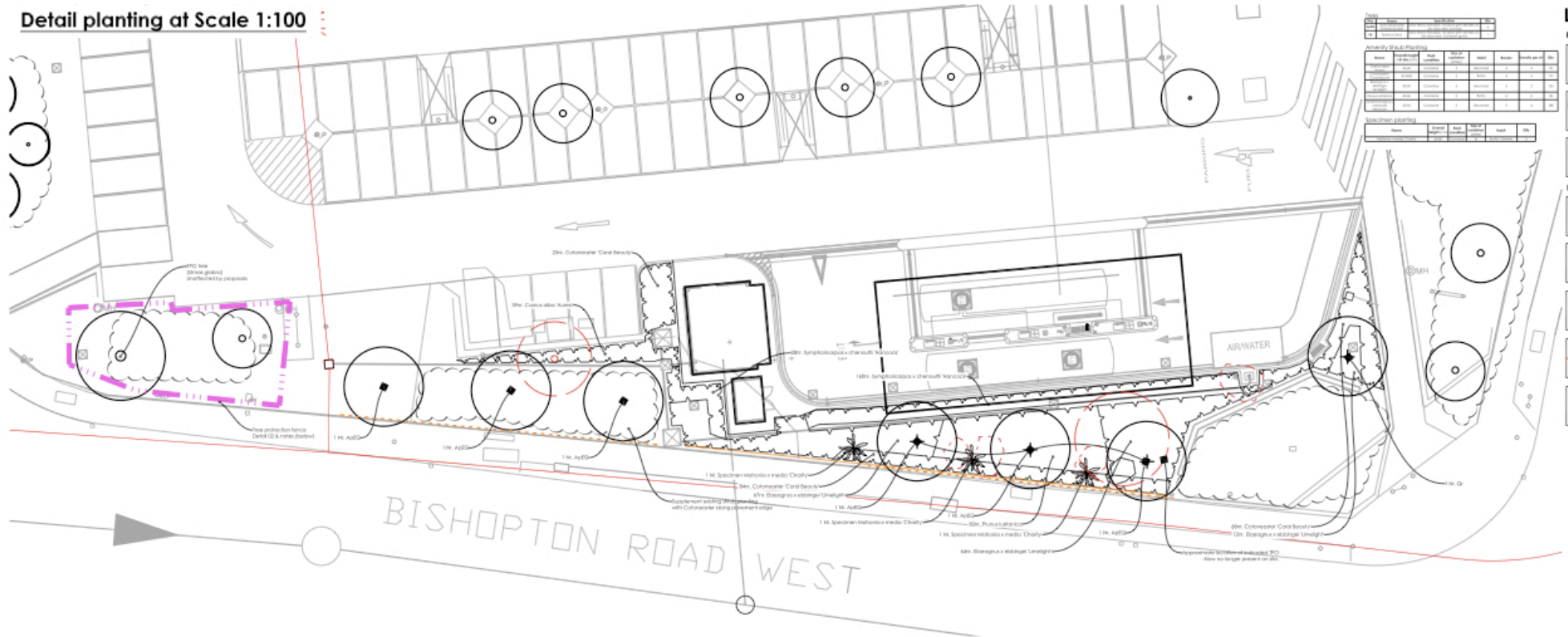
5. Site plan showing overall site and location of petrol filling station, kiosk and plant room



PROPOSED SITE PLAN 1:250

# 6. Landscaping plan

## Detail planting at Scale 1:100



**Table 1: Material Schedule**

Item	Quantity	Unit	Notes
...	...	...	...

**Table 2: Proposed Planting**

Item	Quantity	Unit	Notes
...	...	...	...

**Table 3: Existing Planting**

Item	Quantity	Unit	Notes
...	...	...	...

### Legend

**Existing**

- Tree (Symbol: Circle with a dot)
- Vegetation (Symbol: Dotted circle)
- Vegetation and tree (Symbol: Circle with a dot and a dashed outline)

**Proposed**

- Tree (Symbol: Circle with a plus sign)
- Arrest (Symbol: Dashed square)
- Specie (Symbol: Star)
- Roof terrace (Symbol: Dashed line)
- Service (Symbol: Square with a dot)

